



LINE DEFINES SCOPE OF (N) ROCKWOOL INSULATION IN (E) EXTERIOR WALL CAVITY.

KITCHEN WALL FURRED OUT WITH:  
 • 7/8" METAL FURRING MIN. TO MAKE WALL PLUMB.  
 • 5/8" TYPE 'X' GWB  
 • STAINLESS STEEL WALL FINISH

INFILL WINDOW OPENINGS TO MATCH EXTERIOR WALL CONSTRUCTION AND FINISHES

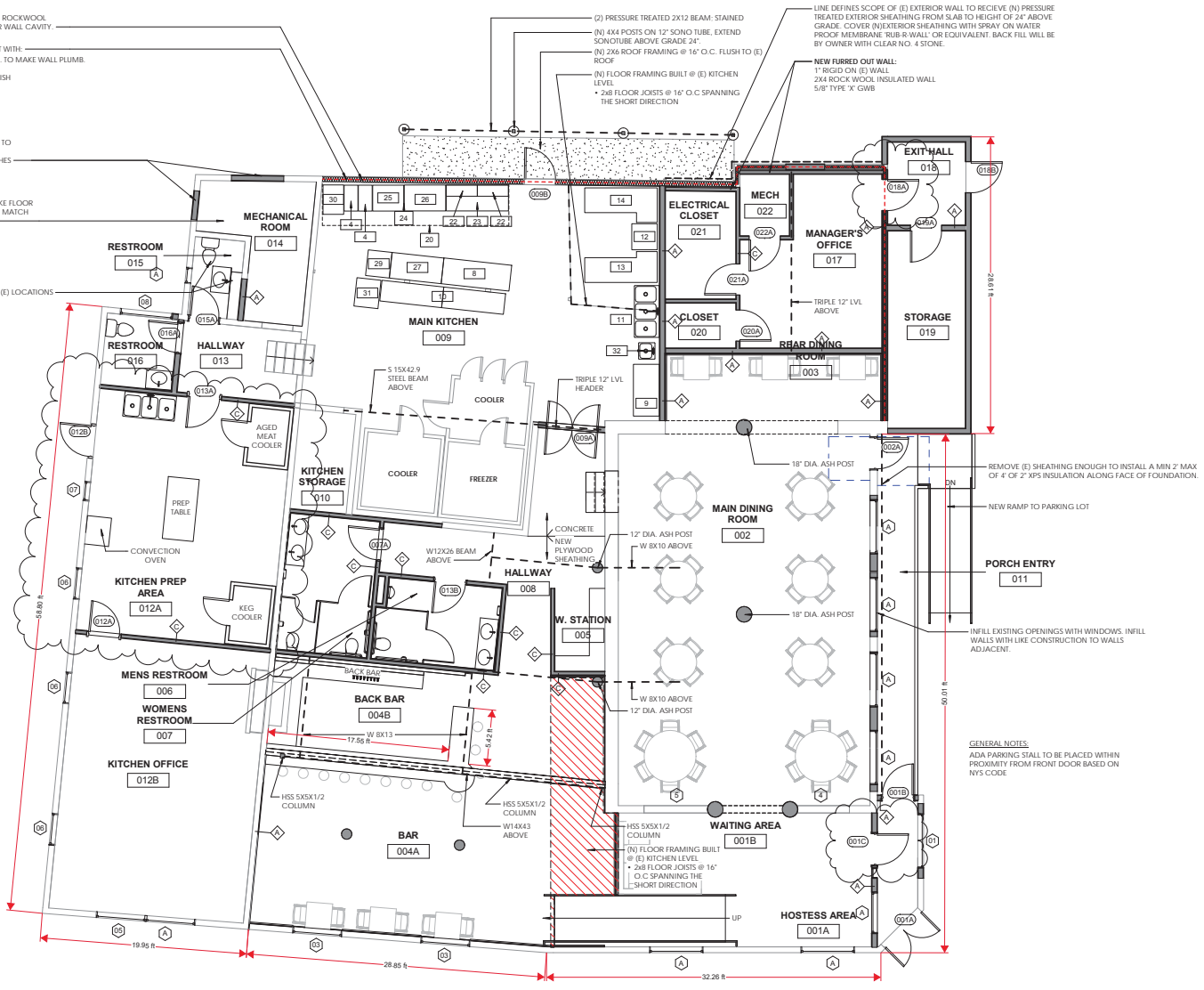
(N) BUILT UP FLOOR TO MAKE FLOOR FINISH LEVEL IN THIS ROOM MATCH ADJACENT ROOM.

(N) RESTROOM FIXTURES IN (E) LOCATIONS

(2) PRESSURE TREATED 2X12 BEAM: STAINED  
 (N) 4X4 POSTS ON 12" SONO TUBE, EXTEND SONOTUBE ABOVE GRADE 24"  
 (N) 2X6 ROOF FRAMING @ 16" O.C. FLUSH TO (E) ROOF  
 (N) FLOOR FRAMING BUILT @ (E) KITCHEN LEVEL  
 • 2X8 FLOOR JOISTS @ 16" O.C. SPANNING THE SHORT DIRECTION

LINE DEFINES SCOPE OF (E) EXTERIOR WALL TO RECEIVE (N) PRESSURE TREATED EXTERIOR SHEATHING FROM SLAB TO HEIGHT OF 24" ABOVE GRADE. COVER (N) EXTERIOR SHEATHING WITH SPRAY ON WATER PROOF MEMBRANE RUB-R-WALL OR EQUIVALENT. BACK FILL WILL BE BY OWNER WITH CLEAR NO. 4 STONE.

NEW FURRED OUT WALL:  
 1" RIGID ON (E) WALL  
 2X4 ROCK WOOL INSULATED WALL  
 5/8" TYPE 'X' GWB



- KITCHEN EQUIPMENT KEY:**
- 20 - EXHAUST HOOD
  - 4 - GAS FRYER
  - 8 - SERVING COUNTER: HOT FOOD- GAS
  - 9 - WORK TABLE: STAINLESS STEEL
  - 10 - WORK TABLE: STAINLESS STEEL
  - 11 - COMPARTMENT SINK (3 BAYS)
  - 12 - DOOR TYPE DISHWASHER
  - 13 - SOILED STAINLESS STEEL DISHTABLE
  - 14 - CLEAN STAINLESS STEEL DISHTABLE
  - 22 - SALAMANDER BROILER- GAS
  - 23 - 12" RANGE- 12 BURNERS
  - 24 - EQUIPMENT STAND: REFRIGERATED BASE
  - 25 - CHARBROILER- COUNTER TOP MODEL- GAS
  - 26 - GRIDDLE- COUNTER TOP MODEL- GAS
  - 27 - SANDWICH/SALAD PREPARATION REFRIGERATOR
  - 28 - POT FILLER
  - 29 - REACH-IN UNDERCOUNTER FREEZER
  - 30 - STEAMER- COUNTER TOP MODEL- CONVECTION
  - 31 - HEATED HOLDING CABINET- HALF HEIGHT
  - 32 - HAND SINK
  - 33 - STAINLESS STEEL WORK TABLE W/ PREP SINK
  - 34 - OVER SHELF- STAINLESS STEEL
  - 35 - HEAT LAMP

REMOVE (E) SHEATHING ENOUGH TO INSTALL A MIN 2" MAX OF 4" OF 2" XPS INSULATION ALONG FACE OF FOUNDATION.

NEW RAMP TO PARKING LOT

INFILL EXISTING OPENINGS WITH WINDOWS. INFILL WALLS WITH LIKE CONSTRUCTION TO WALLS ADJACENT.

**GENERAL NOTES:**  
 ADA PARKING STALL TO BE PLACED WITHIN PROXIMITY FROM FRONT DOOR BASED ON NYS CODE



ARCHITECT:  
 AJA Architecture and Planning  
 3 Broad Street  
 Glens Falls NY, 12001  
 518.752.1051

THIS DOCUMENT CONTAINS COPYRIGHTED MATERIAL BELONGING TO AJA ARCHITECTURE AND PLANNING. ANY UNAUTHORIZED USE, DISCLOSURE, REPRODUCTION OR DUPLICATION OF ANY INFORMATION CONTAINED HEREIN MAY RESULT IN LIABILITY UNDER APPLICABLE LAWS.

Verify all dimensions before the commencement of work. Report to the consultant any discrepancy found.

No.	Date	Rev.	Description
1	11/02/2018	A/A	REVISION 2
2	08/06/2011	A/A	REVISION 3
3	11/26/18	A/A	REVISION 4
4	11/14/19	A/A	REVISION 5
5			



**3873 ROUTE 9L LLC**  
**EAST COVE RESTAURANT**  
**PROPOSED FLOOR PLAN**

Project: 3873 ROUTE 9L LLC  
 Date: 05/12/2017  
 Scale: As indicated  
 Drawn: RK  
 Checked: AJA  
 Project No: 16108

**A101**  
 Revision No. 5

1 FLOOR PLAN  
 3/16" = 1'-0"